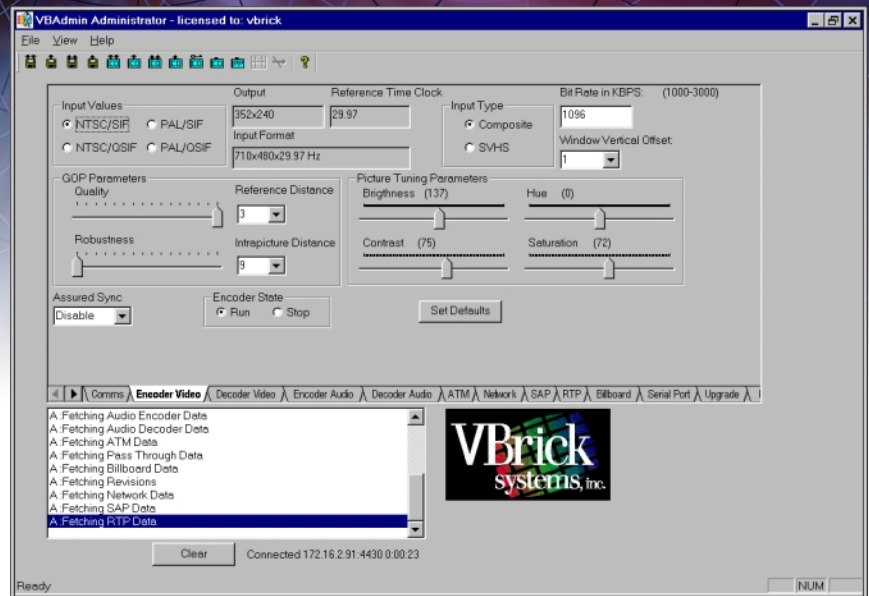


Total VBrick Control

VBAdmin™ is a comprehensive configuration tool that presents a graphical user interface for the total management of VBrick Video Network Appliances (Models 1000, 2000 and 3000 series).

VBAdmin operates under Windows™ and makes the configuration and management of VBricks easy. It also includes diagnostic tools and provides equipment and network statistics.



Features

- Simple to use graphical user interface
- Inexpensive but powerful management tool
- Centralized control of any VBrick in the network
- Connectivity through a serial port or via the IP network
- Change any parameter including:
 - Video Encoding Rate
 - Audio Encoding Rate
 - Billboard Message
 - IP Network destination and receive address
 - Unicast & Multicast
- Perform diagnostics – loopbacks, internal tests
- Save every VBrick configuration to your hard disk so that it can be easily downloaded into any VBrick

Applications

- Remotely set-up videoconferences or streaming events from a central location
- Upload new features into any VBrick from a remote location
- Isolate network and equipment problems quickly
- Duplicate VBrick configurations into multiple units without having to enter each parameter again

Benefits

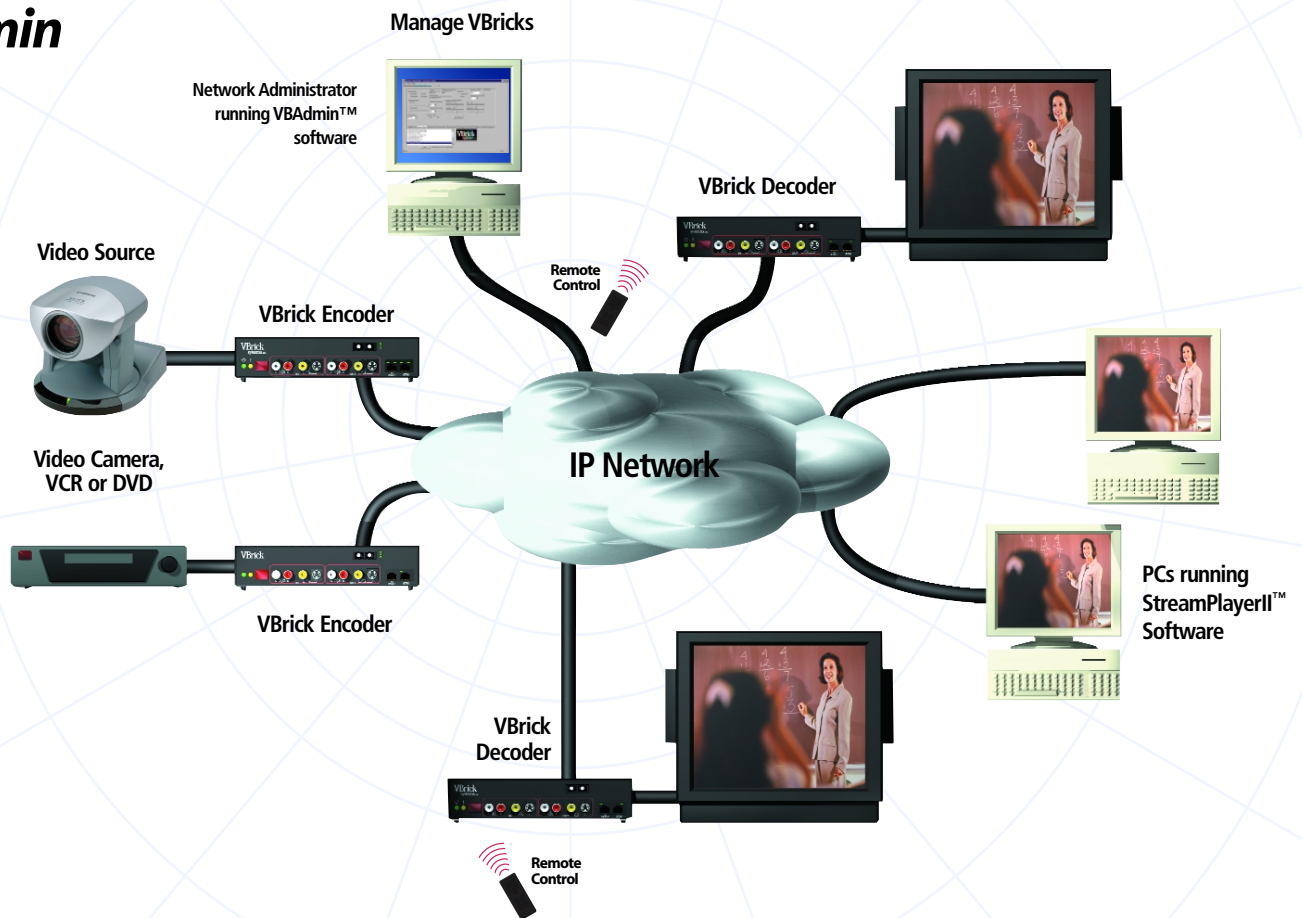
- Manage every VBrick in your network from one central location
- Provides instant equipment status
- Allows distributed control of VBricks

VBAdmin™ Administration Software

Minimum Requirements

- Windows 95, 98, 2000 or NT
- 200 Mhz Pentium I processor
- 32 Mb RAM
- 10 MB hard disk space for installation
- PC network interface – serial or 10Base-T Ethernet (IP)

VBAdmin



Specifications subject to change without notice.

All logos are trademarks of their respective companies.

RI/01 5k

VBrick
systems, inc.

12 Beaumont Road
Wallingford, Connecticut 06492 USA
Phone (203) 265-0044 ■ Fax (203) 265-6750
www.vbrick.com