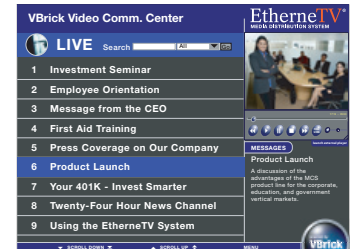


EtherneTV-MCS



Media Control Server Widens the Reach of Visual Communications

The VBrick EtherneTV-MCS (Media Control Server) provides a common portal for accessing Live and On-Demand audio and video content. A key component of VBrick's EtherneTV Media Distribution System, the MCS provides a simple interface to easily locate available media assets from Windows PCs, MACs, and Set Top Boxes. Upon accessing the main portal page, users can navigate or search for specific videos, select the video, and immediately begin viewing DVD quality video. For On-Demand videos, users can fast forward/rewind and seek to specific points in the video.



The EtherneTV-MCS significantly reduces administrative time by eliminating the need to manually update web pages. New videos, Live or On-Demand, automatically display via the interface when they are available for viewing.

Applications

- **Distribute Live Television Channels** — provide breaking news and information on PCs
- **Distribute Live Events** — live campus events or presentations can now be distributed to students and employees over your existing network
- **Record Lectures to Disk** — provide extra teaching/training material available anytime

Product Features

Key End User Features

- **Common portal** for live and on-demand streams
- PCs and set top boxes view **single user interface** screens through StreamOne™
- **Full screen video** (up to DVD quality)
- **Preview video** in web page or launch an external player
- **Search and record** videos
- Supports **MPEG-1, 2, and 4**
- **Closed captioning** for MPEG-1 and MPEG-2

Key Administrative Features

- **Schedule** videos
- **Upload thumbnail** images to associate with videos
- **Display global messages** & client branding
- **Assign channels** to live streams
- **Display messages** with live streams

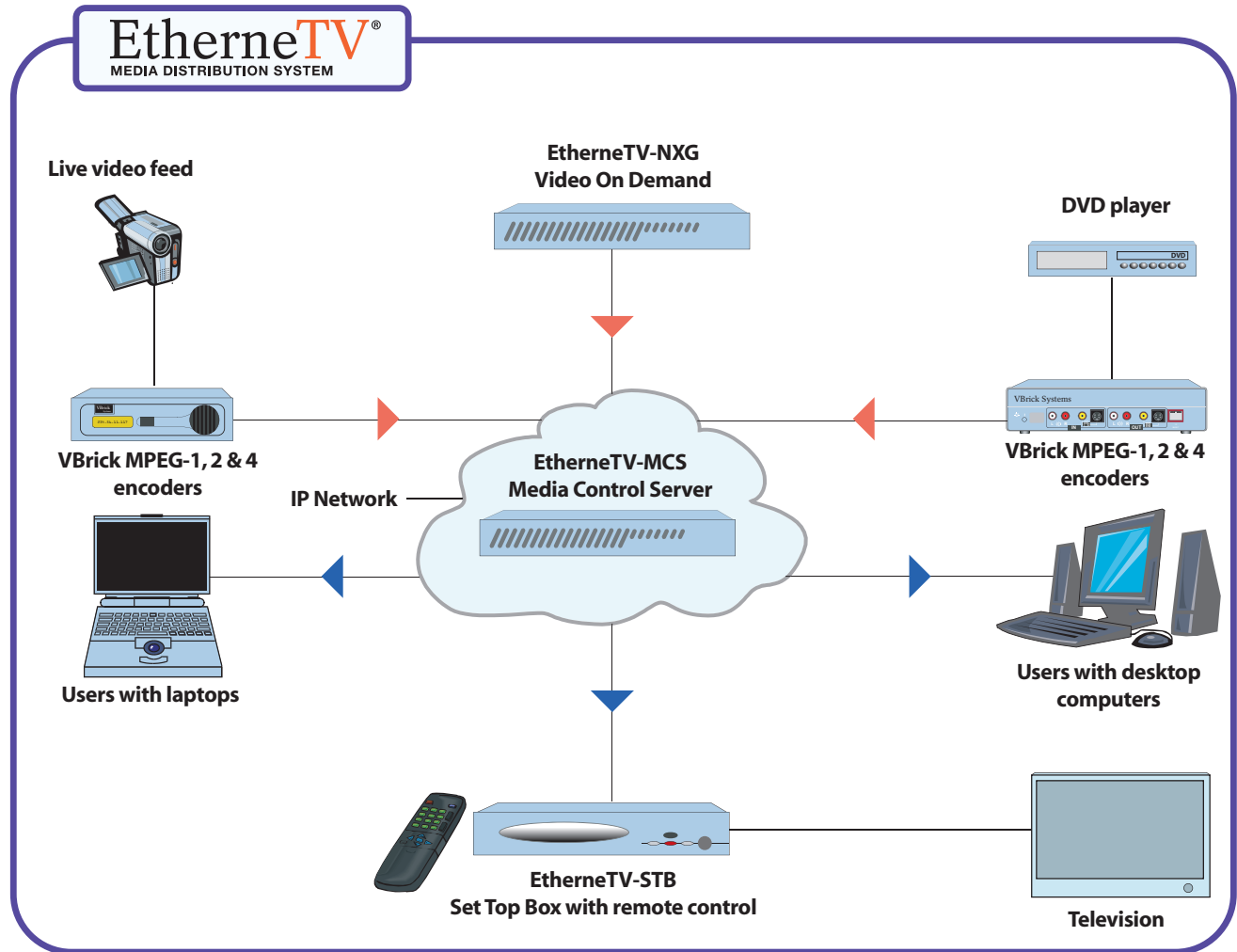
Target Markets

- Education
- Corporate
- Health Care
- Government
- Military
- Intelligent Transportation Systems
- Entertainment

Benefits and Advantages

- **Consistent user experience** — reduces training and support costs
- **Easy to use** — MCS screens are easily navigated and similar to a TV Guide® menu
- **No web development required** — customers receive the benefits of a web-based system with no web development needed
- **Automatic updates** — new content is automatically updated on the system, eliminating administrative time to manually update web links
- **Reduce costs** — eliminate costs associated with maintaining a separate analog video network and physically transporting VCR tapes and DVDs
- Available as **software only or fully loaded on web server** hardware

SPECIFICATIONS



Interoperability

- VBrick EtherneTV-NXG Video on Demand server
- VBrick EtherneTV-STB Set Top Box for MPEG-1, 2, and 4
- Windows-based PCs (98/2000/XP)
- VBrick 1000-3000 Series MPEG-1 encoders
- VBrick 4000-6000 Series MPEG-2 and MPEG-4 encoders

System Requirements

- Windows 2000 Server or Windows 2003 Server
- Pentium IV or Xeon Processor 1.26 GHz minimum
- RAM 512 MB minimum
- Hard Drive 36 GB minimum (larger for frequent recording)

Client PC Requirements

- Operating system Windows 98/2000/XP
- StreamPlayer software automatically downloaded from the MCS (please see StreamPlayer datasheet for detailed requirements)