

## EtherneTV-STB



## Set Top Box Widens the Reach of Visual Communications

VBrick's EtherneTV-STB (Set Top Box) is an ideal MPEG decoder for cost sensitive installations that require large-scale deployment. The user-friendly set top box is controlled like a cable TV receiver through an IR remote. It can be used to access live streams, request stored content from EtherneTV-NXG Video On-Demand server or access the World Wide Web. It is integrated with VBrick's EtherneTV-MCS (Media Control Server), to provide an automated streaming solution for both live streams and stored content. It supports MPEG-1, MPEG-2 and MPEG-4 on a single platform and can be deployed either as a stand-alone device or with the MCS for enhanced functionality.

The VBrick EtherneTV-STB enables everyone to enjoy a customized interactive television viewing experience that includes rich media content from the Internet and digital data broadcasting.

### Applications

- **Distance Learning** — Distribute educational material to classrooms
- **Critical Information Sharing** — Provide real-time news delivery to all personnel
- **Corporate News Distribution** — Stream company news and training information to desktops, breakrooms, and conference rooms
- **Medical Training** — Provide up-to-date medical information to doctors and patient rooms
- **Real Time Information Sharing** — Send real-time market information to brokers and traders
- **Factory process monitoring** — Allow monitoring of production lines from remote locations

### Product Features

- **Access** the EtherneTV-NXG Video on Demand server through the EtherneTV-MCS
- **Receive and decode** live MPEG-1, MPEG-2 and MPEG-4 multicast streams
- **Video on Demand support** for MPEG-1, MPEG-2 and MPEG-4
- Access the **World Wide Web**
- **Low cost and compact** size
- **IR Remote control** for easy navigation
- **Boot stand-alone** - No server required
- **Full DHCP and DNS** support
- **Hardware decoding** provides high quality video
- Support for **100s of channels**
- MPEG-1 **rates up to 3 Mbps**, MPEG-2 **rates up to 12 Mbps**, and MPEG-4 **rates up to 1.5 Mbps**
- Optional **wireless keyboard**

### Target Markets

- Education
- Corporate
- Health Care
- Government
- Military
- Intelligent Transportation Systems
- Entertainment

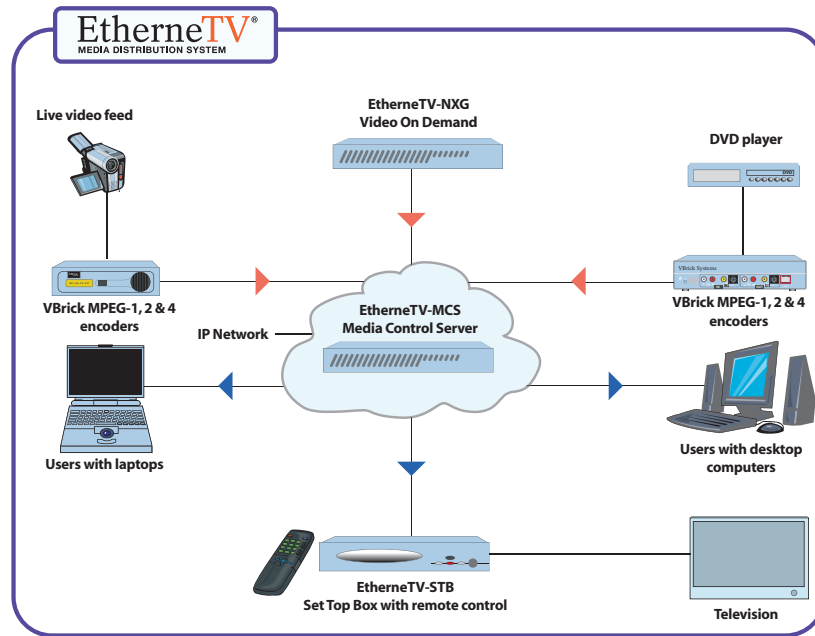
### Benefits and Advantages

- **Lower costs** by reducing travel expenses
- **Increase productivity** - Train with high quality video
- **Keep employees informed** worldwide with regular company news broadcasts
- **Network appliance design** - Simple to set up and use

### Interoperability

- **EtherneTV-MCS** Media Control Server
- **EtherneTV-NXG** Video on Demand Server
- **VBrick 1000, 2000, and 3000 Series** MPEG-1 encoders
- **VBrick 4000, 5000, and 6000 Series** MPEG-2 and MPEG-4 encoders

# SPECIFICATIONS



<b>Video</b>	MPEG-1, MPEG-2 and MPEG-4 decoder support
	2D Graphics Accelerator
	64 bit DRAM interface optimized for SGRAM 512 x 32 up to 4MB
	6 on chip DACS provide simultaneous VGA and TV output (S-Video and composite or RGB/SCART)
	NTSC 640 x 480 @ 60 Hz
	PAL 800x600/720x540/640x480 @ 50Hz
<b>TV-Out</b>	On Board
	Direct NTSC/PAL output
<b>Audio</b>	Stereo Audio
	VIA VT1611A/612A audio codec with 3D
	AC97 2.1 compliant codec
<b>Front Panel</b>	Power switch, 3 LED, IR Window
<b>Rear Panel</b>	D-sub 15 pin VGA connector
	CBVS composite out (RCA jack yellow)
	Audio out port (RCA jack white,red)
	S-Video (4-pins DIN)
	S/PDIF output (RCA jack orange)
	Two RJ-45 LAN ports (One operational)
	Dual stacked USB port 6-pin mini DIN shared connector for PS/2 keyboard and PS/2 mouse
<b>LAN</b>	Two (2) x Realtek 8100B 10/100 Base T (One port operational)
<b>Audio/Video Switch</b>	STV6412A audio/video switch matrix, I2C control
<b>IR Interface</b>	Yes (Custom with IR/IC converted to standard PS2 code)
<b>Flash Disk Support</b>	32 MB DOM
<b>Certification</b>	FCC Part 15, UL, CE
<b>BIOS</b>	Award BIOS with APM DIP 2Mb flash w/ boot block supported
<b>Chassis Size (LxDxH)</b>	34L x 27.4D x 6H (cm): 13-3/8L x 11D x 2-1/2H (inches)
<b>Power Supply</b>	ATX 65W (STB) 77W (Metallic); 5V, 12V, 100-240 V auto switching
	Power Break Auto Recovery
<b>Features</b>	Simultaneous TV & Monitor Display
<b>OS</b>	LINUX